

A woman in a white lab coat and hairnet is smiling at the camera while working in a food manufacturing facility. She is holding a large knife and is in the process of slicing mushrooms on a wooden cutting board. In the background, another worker in a white lab coat and hairnet is visible, working on a different task. The setting appears to be a modern food processing plant with large windows and industrial equipment.

COMPLETE Food Manufacturing Solution



Your Partner in Food Manufacturing

AlSCO is a leading provider of food manufacturing uniforms and textiles. We offer a wide range of products and services to help you keep your employees safe, comfortable, and compliant with food safety regulations.

Our uniforms are made from high-quality materials that are durable, comfortable, and easy to clean. We also offer a variety of textiles for food manufacturing, including food wipes, tea towels, and safety and wet area mats. Our textiles are made from high-quality materials and are laundered in HACCP certified laundries.

We offer a managed rental program for our uniforms and textiles. This means that we will deliver, collect, and launder your uniforms and textiles on a regular basis, so your staff always have the right uniform available.

We are committed to helping our customers comply with food safety regulations. We offer a variety of services to help you ensure that your uniforms and textiles are clean and sanitary.



Professional and Hygienic

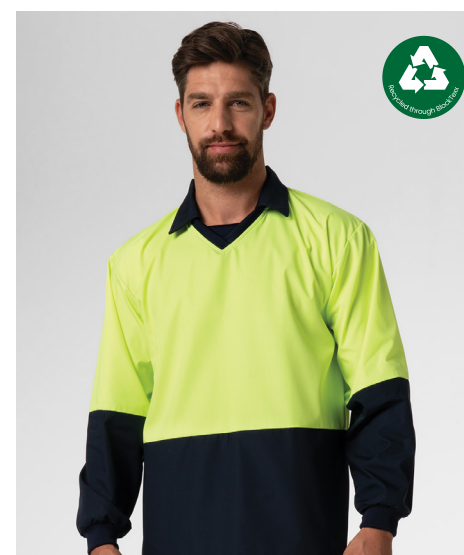
The AlSCO range of high quality uniforms for Food Manufacturing industries ensures every employee can look and feel professional while meeting food industry hygiene standards.



PULLOVER FOOD INDUSTRY SHIRT

160 GSM | 65/35 Polycotton |
White | FOD.TOP004

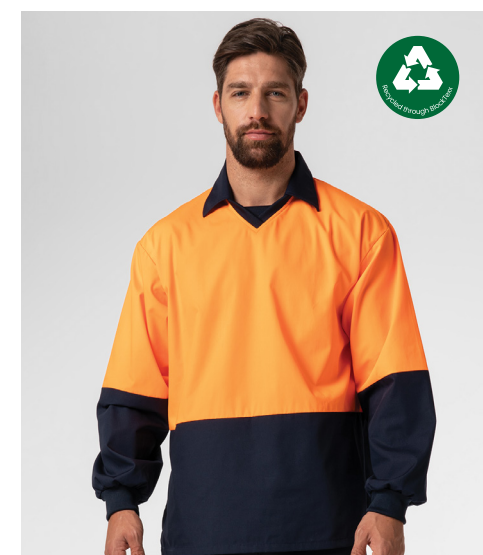
The pullover shirt is perfect for food industry workers who need a comfortable and durable uniform. The shirt is made from a high-quality cotton blend that is soft and breathable, making it perfect for long days on the job. The shirt also features a relaxed fit that allows for plenty of movement, and a crew neck that provides a comfortable and stylish look.



FOD.SHR001-800



FOD.SHR001-100



FOD.SHR001-801



FOOD PANT WITH POCKETS - UNISEX

65/35 Polycotton | 240 GSM | White | FOD.TOP005-122
65/35 Polycotton | 240 GSM | Navy | FOD.PNT002-820

These pants features an elasticated drawstring waist, side hand pockets (with the left side having an internal fob), making it suitable for Food Manufacturing/Processing industries.



TEA TOWEL & WIPES

Soft, heavy-weight and super absorbant.



FOOD DUSTCOAT WITH ORANGE CONTRAST

65/35 Polycotton | 240 GSM | White/Orange | FOD.DCT009-100



FOOD DUSTCOAT HI-VIS DAY

65/35 Polycotton | 240 GSM | Orange/White | HVZ.DCT002-304

Convenient and Economical

Also provides convenient and economical solutions for maintaining the highest linen standards for your business.

TEA TOWEL

Soft, heavy-weight and super absorbent.

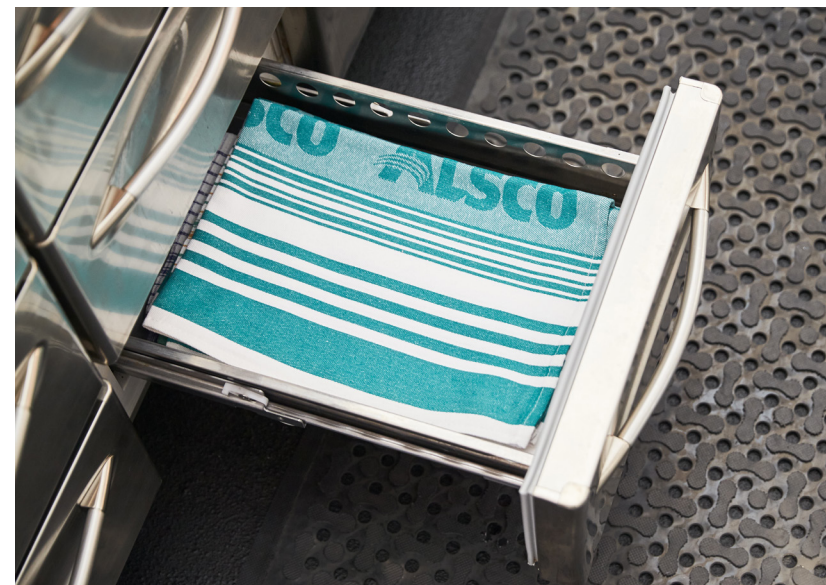


TEA TOWEL MID-BLUE STRIPE

TKCN1EA-MB

100% Cotton 105gsm | 45 x 76cm

Soft, heavy-weight and super absorbent.

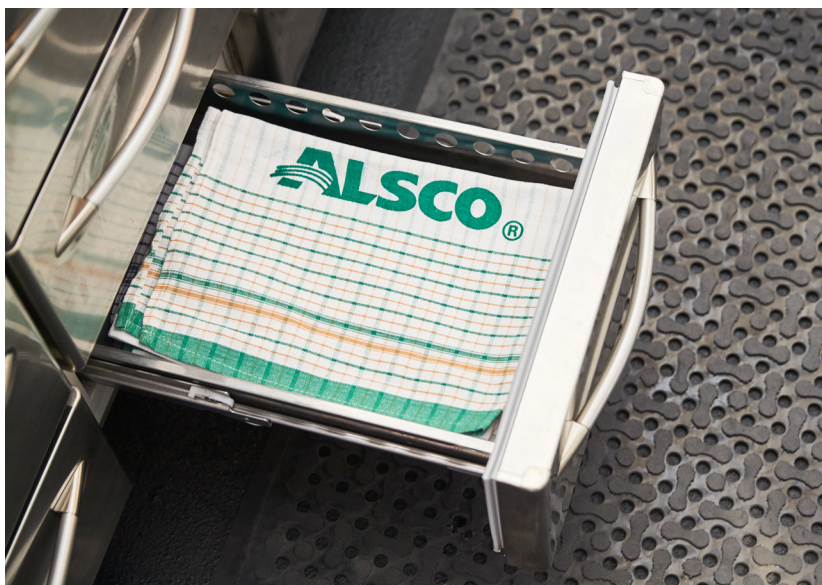


TEA TOWEL GREEN STRIPE

TKCN1J

100% Cotton 100gsm | 50 x 76cm

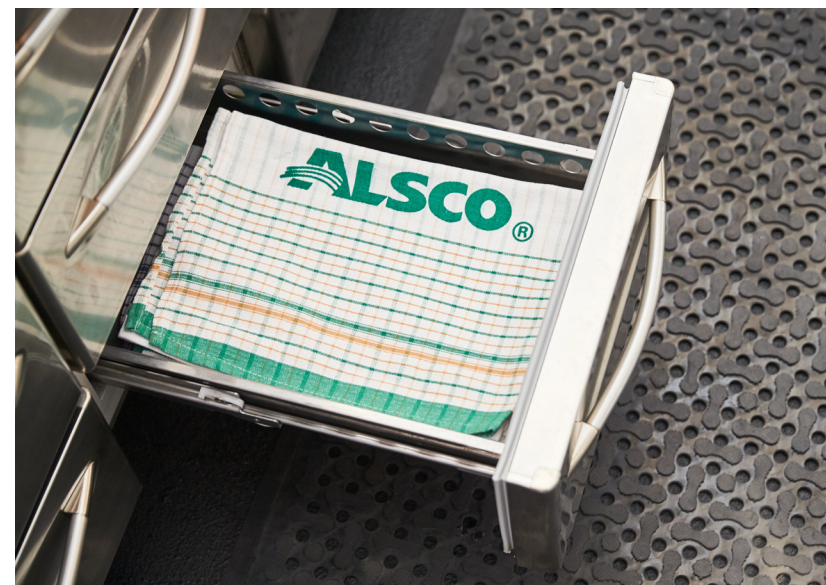
The classic AlSCO tea towel.
Medium-weight, 100% cotton
jacquard.



TEA TOWEL GREEN & GOLD STRIPE

TKCN1EA-WH

100% Cotton 105gsm | 45 x 76cm



TEA TOWEL BLUE STRIPE

TKCN1STT-BS

100% Cotton 85gsm | 46 x 77cm

Soft, light-weight and super absorbent.



SOFT, HEAT RESISTANT OVEN MITT

TKCNOM

100% Cotton Terry | White | 37L x 25W cm



COTTON STRIPED FOOD WIPE

A cleaning wipe for all hard services,
colour coded to assist with food safety management.



White/Blue

WICN6ST-GN



White/Red

WICN6ST-PK



White/Green

WICN6ST-NV



FIRST AID

Get workplace compliant

Take advantage of AlSCO's First Aid Rental Service to save time and money. Keep your workplace compliant with WHS laws, and keep your workplace safe, healthy and happy.



FIRST AID KIT REGULAR

WRHWALCRFI

CABINET LINER

Regular
WRCOALHLAI
WRCOALHLRI

Regularly serviced and any items used between services are provided at no extra cost.



FIRST AID KIT SMALL

WRHWALCRFI

CABINET LINER

Small
WRCOALHLBI
WRCOALHSSF1

Regularly serviced and any items used between services are provided at no extra cost.



EYE WASH STATION

TKCN1STT-BS

AlSCO Eyewash Stations are the ideal solution for workshops, labs, schools or kitchens where hazardous objects or materials could potentially cause eye injuries.



PORTABLE FIRST AID KIT

FASBPTHOSP

Just like our regular sized first aid kit but in a sturdy, portable zip bag, ready to grab and go.



MOTORIST FIRST AID KIT

WRHWALCRFI

A compact first aid kit in a sturdy, portable zip bag suitable for all vehicles, ready to grab and go

AUTOMATED EXTERNAL DEFIBRILLATOR (AED)



Did you know that Sudden Cardiac Arrest is the #1 killer in Australia.

A Sudden Cardiac Arrest is usually caused by a malfunction in your heart's electrical system that causes your heart to stop pumping.

AEDs can deliver a life-saving electric shock, which often means the difference between life or death.

Light. Easy. Zero Training required.

AlSCO's portable AEDs are light-weight, have simple press-button technology and step-by-step voice instructions, making it suitable for use by both professionally trained medics and staff with zero medical training.





MATS

AlSCO offers a comprehensive floor care solution tailored to meet your business needs. Our wide range of high-quality and technologically advanced mats not only minimise cleaning costs but also provide floor protection and enhance the safety of your staff and customers. With AlSCO, you can rely on our expertise to keep your floors clean, well-maintained, and safe.

WELCOME MAT

Super Styrene/Nitrile Rubber | Red

Make a great first impression with our Welcome Mat. This stylish and functional mat is designed to enhance the entrance of any establishment.

5x3ft (85x150cm)
DCNYWELC76

6x4ft (115x180cm)
DCNYWELC77



SAFETY MESSAGE MAT

Super Styrene Raptor Backing | Multi

Our standout Safety Message Mat designs, serving as a constant reminder to prioritise workplace safety. AlSCO's mats deliver important weekly messages while being highly functional. With exceptional water and dirt collection properties, they protect floors and reduce the risk of slips and trips. Tested by the NFSI, our super grip raptor backing ensures the mat stays in place all week.

5x3ft (79x158cm)
DCNYA76SAF5

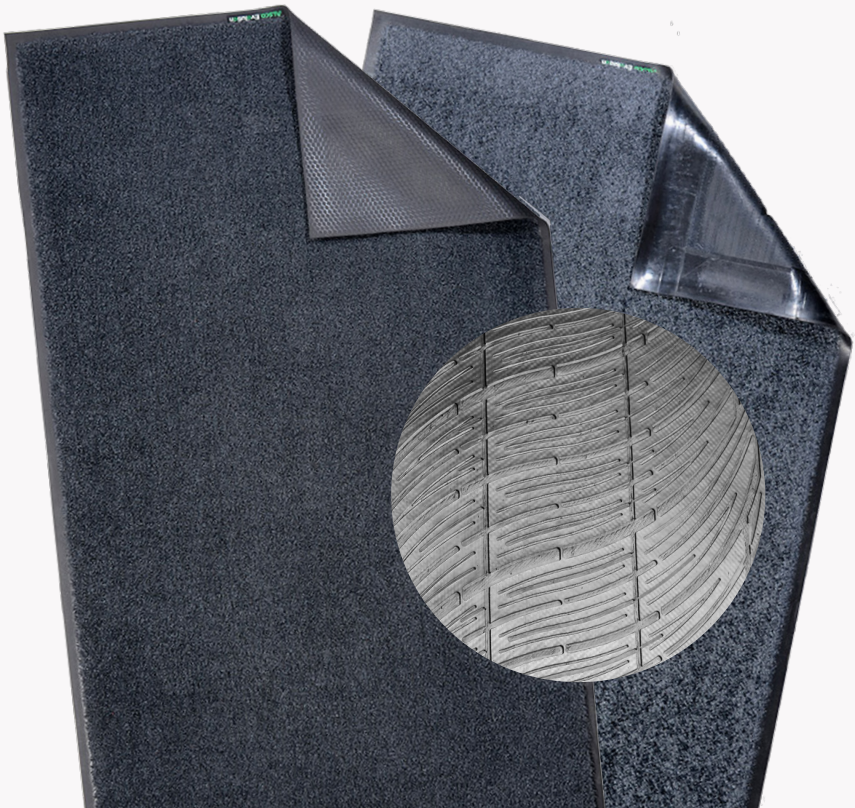


DUSTOP EVOLUTION MAT

Gripper backing

Our mats offer a dual benefit of protecting your floors from the inevitable wear and tear, while also actively contributing to slip and trip prevention. What's more, these mats are environmentally friendly, as they are crafted using 100% recycled.

Anthracite, Ebony and Storm



COMFORT FLOW ANTI FATIGUE MAT

SBR/Natural Rubber | Black

The Comfort Flow Anti-Fatigue Mat combines superior comfort and functionality, providing an optimal solution for reducing fatigue in the workplace.



5x3ft (85x150cm)
DCNYA76COL-ANT

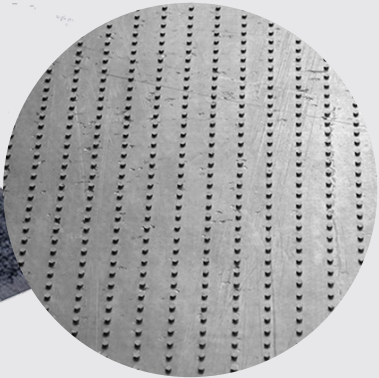
6x4ft (115x180cm)
DCNYA77COL-ANT

10x3ft (85x300cm)
DCNYA78COL-ANT

Evolution Pile Fibre with
Nitrile Rubber Backing

DUSTOP EVOLUTION MAT

Gripper backing



5x3ft (85x150cm)
DCNYA76COL-ANT

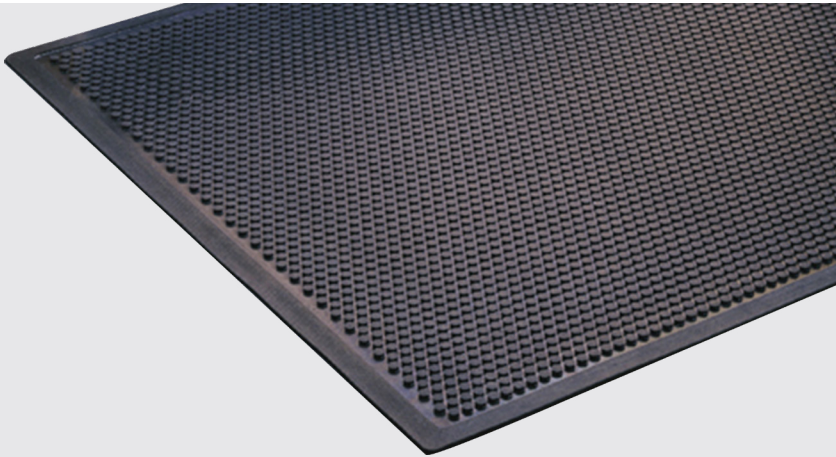
6x4ft (115x180cm)
DCNYA77COL-ANT

10x3ft (85x300cm)
DCNYA78COL-ANT

KEX ANTI FATIGUE MAT

SBR/Natural Rubber | Black

Experience exceptional comfort and durability with the KEX Anti-Fatigue Mat, featuring bubble-wrap-like top cells that offer outstanding cushioning to reduce workplace fatigue effectively.



5x3ft (85x150cm)
DCNYA76WOW-ANT

6x4ft (115x180cm)
DCNYA77WOW-ANT

10x3ft (85x300cm)
DCNYA78WOW-ANT

Evolution Pile Fibre with
Super Styrene Rubber Backing

DUSTOP EVOLUTION MAT

Raptor backing



5x3ft (85x150cm)
DCNYA76WOW-ANT

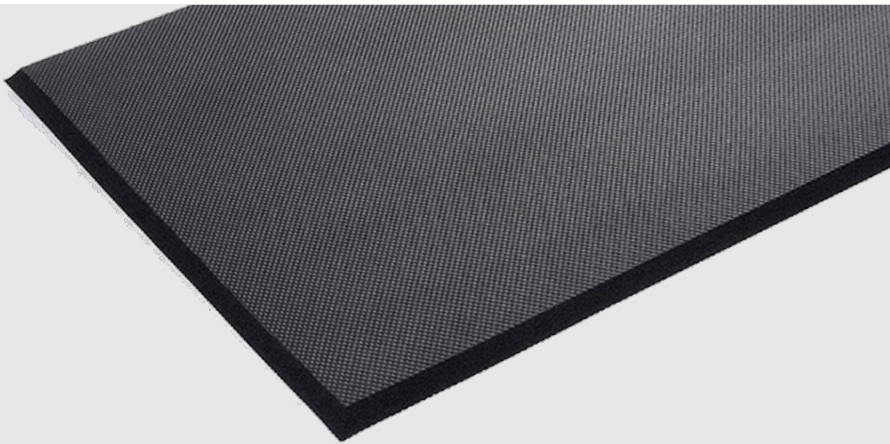
6x4ft (115x180cm)
DCNYA77WOW-ANT

10x3ft (85x300cm)
DCNYA78WOW-ANT

SOFT ANTI FATIGUE MAT

Nitrile Foam | Black

Indulge in unparalleled comfort and relief with our soft anti-fatigue mats, specifically designed to alleviate the strain on your feet and legs, providing a cushioned surface that promotes better posture, reduces fatigue, and enhances overall well-being.



5x3ft (85x150cm)
DCNYA76WOW-ANT

6x4ft (115x180cm)
DCNYA77WOW-ANT

10x3ft (85x300cm)
DCNYA78WOW-ANT

CORPORATE LOGO MATS

Super Styrene/Nitrile Rubber | Muti-Coloured

Experience the brilliance of high-definition colours and witness your logo come to life with impeccable precision. Welcome your guests into your business with our Corporate Logo Mats, tailored to your preferences.

5x3ft (85x150cm)
DCNYWELC76

6x4ft (115x180cm)
DCNYWELC77

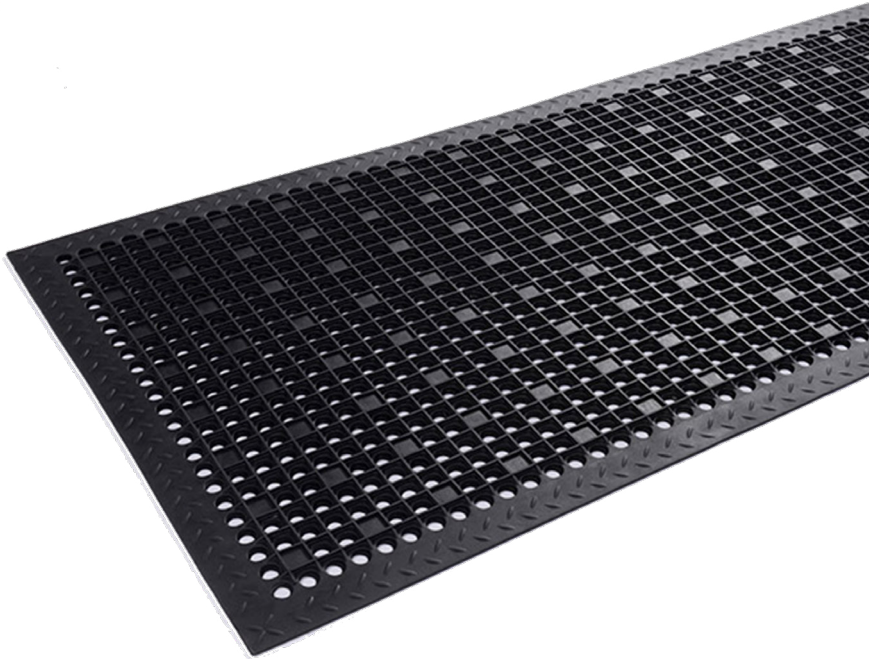


WET AREA MAT

SBR/Natural Rubber | Black

Our mats feature circular holes that effectively channel water, grease, and food debris away from workers’ feet, making them an exceptionally safe choice for kitchen, bar areas, and other wet environments. Additionally, the mats’ suction cup backing ensures a secure grip on slippery and smooth floors, providing enhanced stability and minimise accidents.

5x3ft (79x158cm)
DCNYA76SAF5



CONTINUOUS TOWEL

The AlSCO continuous towel is the perfect solution for high-traffic handwashing areas such as washrooms, kitchens, and food processing areas.

The towel is made from a high-quality, absorbent material that is easy to clean and maintain. The towel is also dispensed in a continuous loop, which eliminates waste and ensures that there is always a towel available when needed.





Block Texx is a clean technology company that recovers polyester and cellulose from textiles and clothing. They divert textiles and clothing away from landfill and accelerate the global textile recycling industry towards a sustainable future.

AlSCO send end of life uniforms and linen to Block Texx, if not donated to other community partners.



Sustainability is our guiding principle.

At AlSCO, we recognise that becoming a sustainable business is about connecting with our people, our planet and our community.

To learn more about our sustainability initiatives, visit our website alsco.com.au/sustainability.